

I-15 MILEPOST 11 INTERCHANGE

Washington City, Washington County, Utah

RECORD OF DECISION AND FINAL ENVIRONMENTAL IMPACT STATEMENT

VOLUME 2

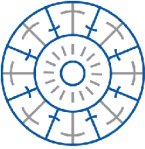
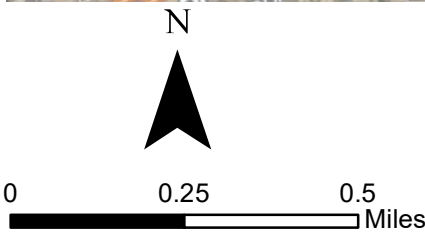
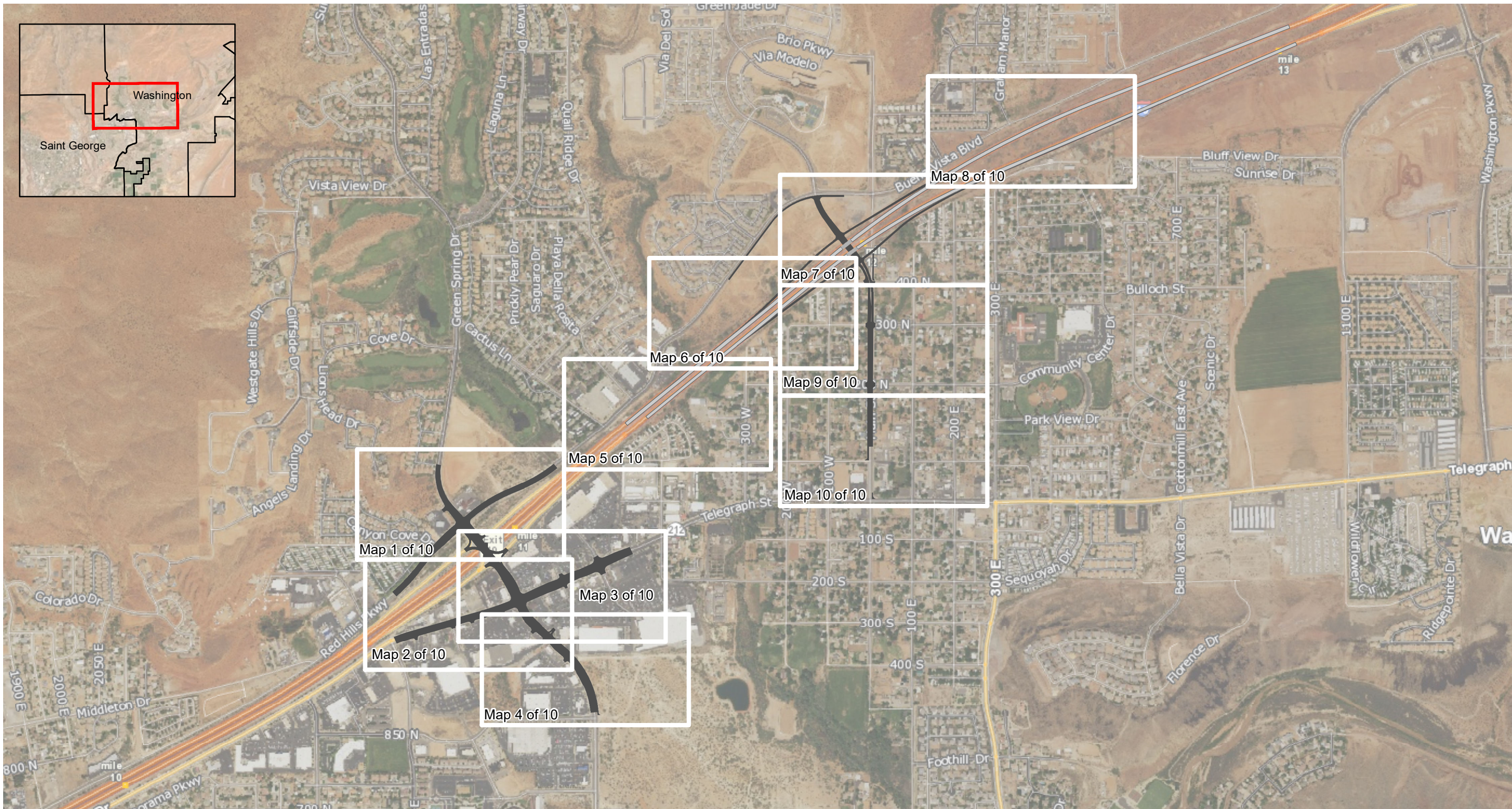
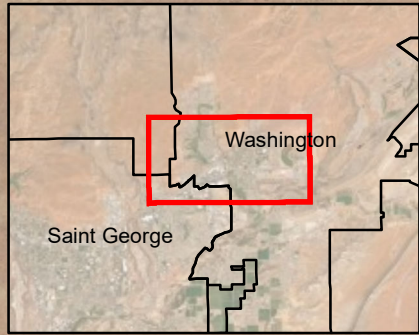
Build Alternatives Maps

The environmental review, consultation, and other actions required by applicable federal environmental laws for this project are being or have been carried out by UDOT pursuant to 23 USC 327 and a Memorandum of Understanding dated January 17, 2017, and executed by FHWA and UDOT.

August 2019

Submitted pursuant to 42 USC 4332(2)(C) and 49 USC 303

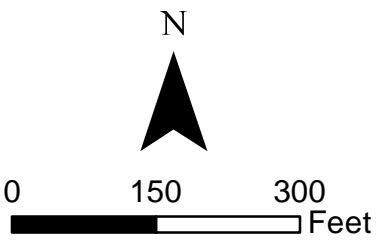
UDOT Project Number: F-115-1(116)11




I-15 MP 11 INTERCHANGE

ENVIRONMENTAL STUDY

Alternative 4: Main Street Interchange
(Preferred Alternative)



- | | | |
|--------------------------|--|--------------------|
| ● Noise Measurement Site | ■ Historic Structures Eligible for the NRHP | ▨ Wetlands |
| ● Noise Impact | — Potential Noise Wall Locations (Pending Balloting) | ■ Waters of the US |
| ● Potential Relocations | ▲ Hazardous Waste Site | ■ Floodplain |
| ● Points of Diversion | ▨ Wetland Impacts | ■ Future Park |

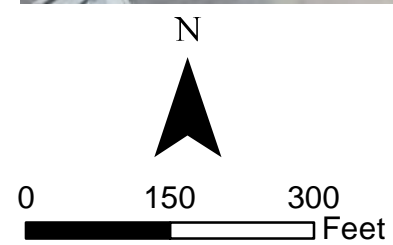
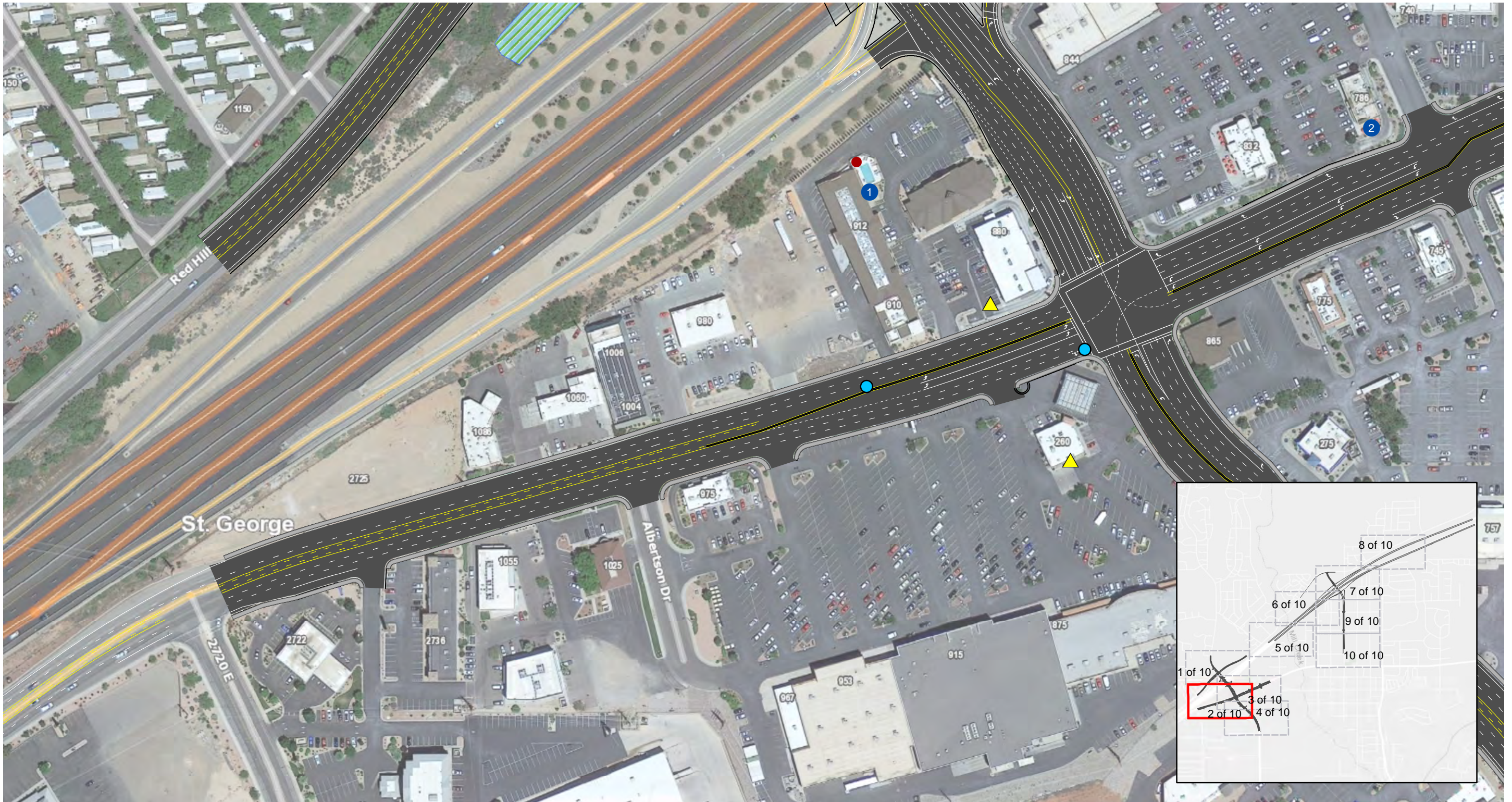


I-15

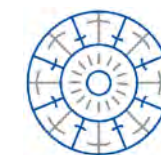
MP 11 INTERCHANGE

ENVIRONMENTAL STUDY

Alternative 4: Main Street Interchange
(Preferred Alternative)

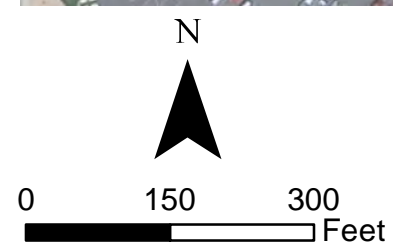
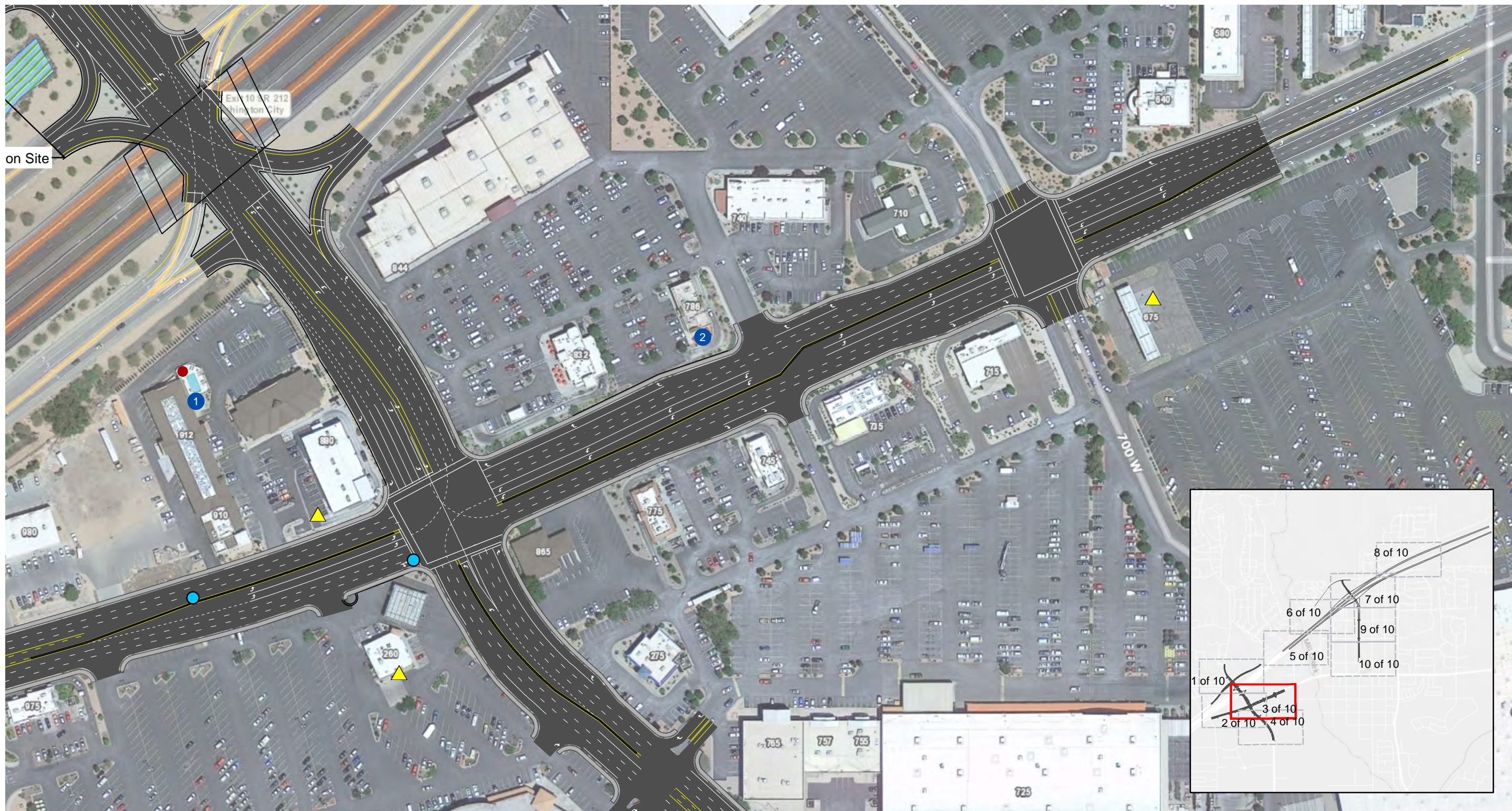


- | | | |
|---|--|---|
| ● Noise Measurement Site | ■ Historic Structures Eligible for the NRHP | ▨ Wetlands |
| ● Noise Impact | — Potential Noise Wall Locations (Pending Balloting) | ■ Waters of the US |
| ● Potential Relocations | ▲ Hazardous Waste Site | ■ Floodplain |
| ● Points of Diversion | ▨ Wetland Impacts | ■ Future Park |



I-15 MP 11 INTERCHANGE
ENVIRONMENTAL STUDY

Alternative 4: Main Street Interchange
(Preferred Alternative)

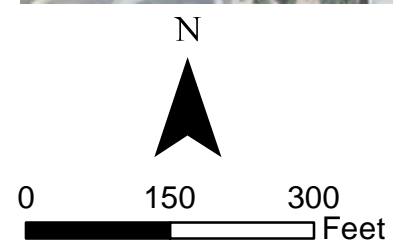


- | | | |
|---|--|---|
| ● Noise Measurement Site | ■ Historic Structures Eligible for the NRHP | ▨ Wetlands |
| ● Noise Impact | — Potential Noise Wall Locations (Pending Balloting) | ■ Waters of the US |
| ● Potential Relocations | ▲ Hazardous Waste Site | ■ Floodplain |
| ● Points of Diversion | ▨ Wetland Impacts | ■ Future Park |



I-15 MP 11 INTERCHANGE
ENVIRONMENTAL STUDY

Alternative 4: Main Street Interchange
(Preferred Alternative)

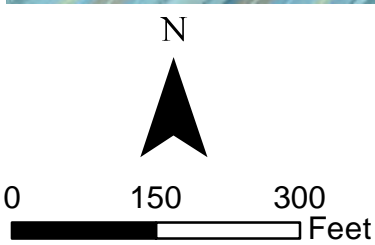


- | | | |
|---|---|--|
| ● Noise Measurement Site | ■ Historic Structures Eligible for the NRHP | Wetlands |
| ● Noise Impact | — Potential Noise Wall Locations (Pending Balloting) | Waters of the US |
| ● Potential Relocations | ▲ Hazardous Waste Site | Floodplain |
| ● Points of Diversion | Wetland Impacts | Future Park |



I-15 MP 11 INTERCHANGE
ENVIRONMENTAL STUDY

Alternative 4: Main Street Interchange
(Preferred Alternative)

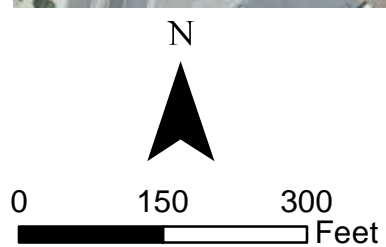


- | | | |
|---|--|---|
| ● Noise Measurement Site | ■ Historic Structures Eligible for the NRHP | Wetlands |
| ● Noise Impact | — Potential Noise Wall Locations (Pending Balloting) | Waters of the US |
| ● Potential Relocations | ▲ Hazardous Waste Site | Floodplain |
| ● Points of Diversion | Wetland Impacts | Future Park |



I-15 MP 11 INTERCHANGE
ENVIRONMENTAL STUDY

Alternative 4: Main Street Interchange
(Preferred Alternative)

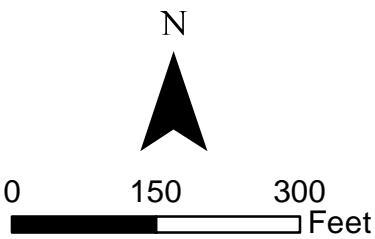
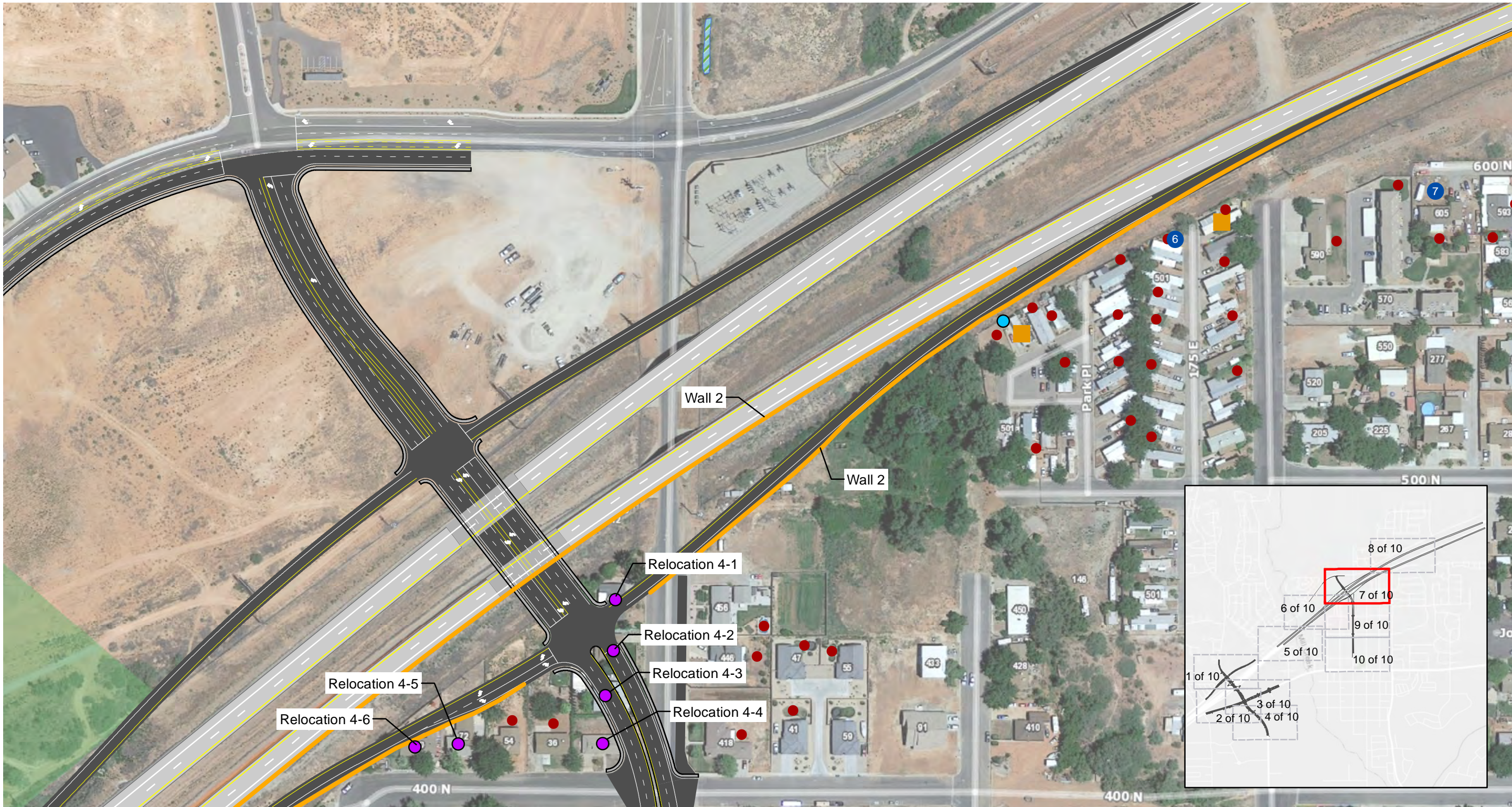


- | | | |
|---|--|---|
| ● Noise Measurement Site | ■ Historic Structures Eligible for the NRHP | Wetlands |
| ● Noise Impact | — Potential Noise Wall Locations (Pending Balloting) | Waters of the US |
| ● Potential Relocations | ▲ Hazardous Waste Site | Floodplain |
| ● Points of Diversion | Wetland Impacts | Future Park |



I-15 MP 11 INTERCHANGE
ENVIRONMENTAL STUDY

Alternative 4: Main Street Interchange
(Preferred Alternative)

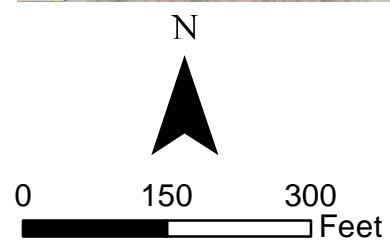


- | | | |
|---|--|---|
| ● Noise Measurement Site | ■ Historic Structures Eligible for the NRHP | ▨ Wetlands |
| ● Noise Impact | — Potential Noise Wall Locations (Pending Balloting) | ■ Waters of the US |
| ● Potential Relocations | ▲ Hazardous Waste Site | ■ Floodplain |
| ● Points of Diversion | ▨ Wetland Impacts | ■ Future Park |



I-15 MP 11 INTERCHANGE ENVIRONMENTAL STUDY

**Alternative 4: Main Street Interchange
(PREFERRED ALTERNATIVE)**

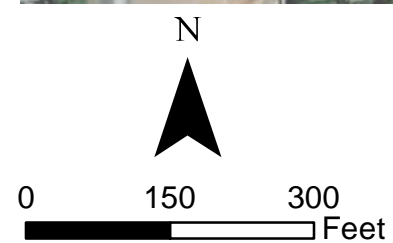
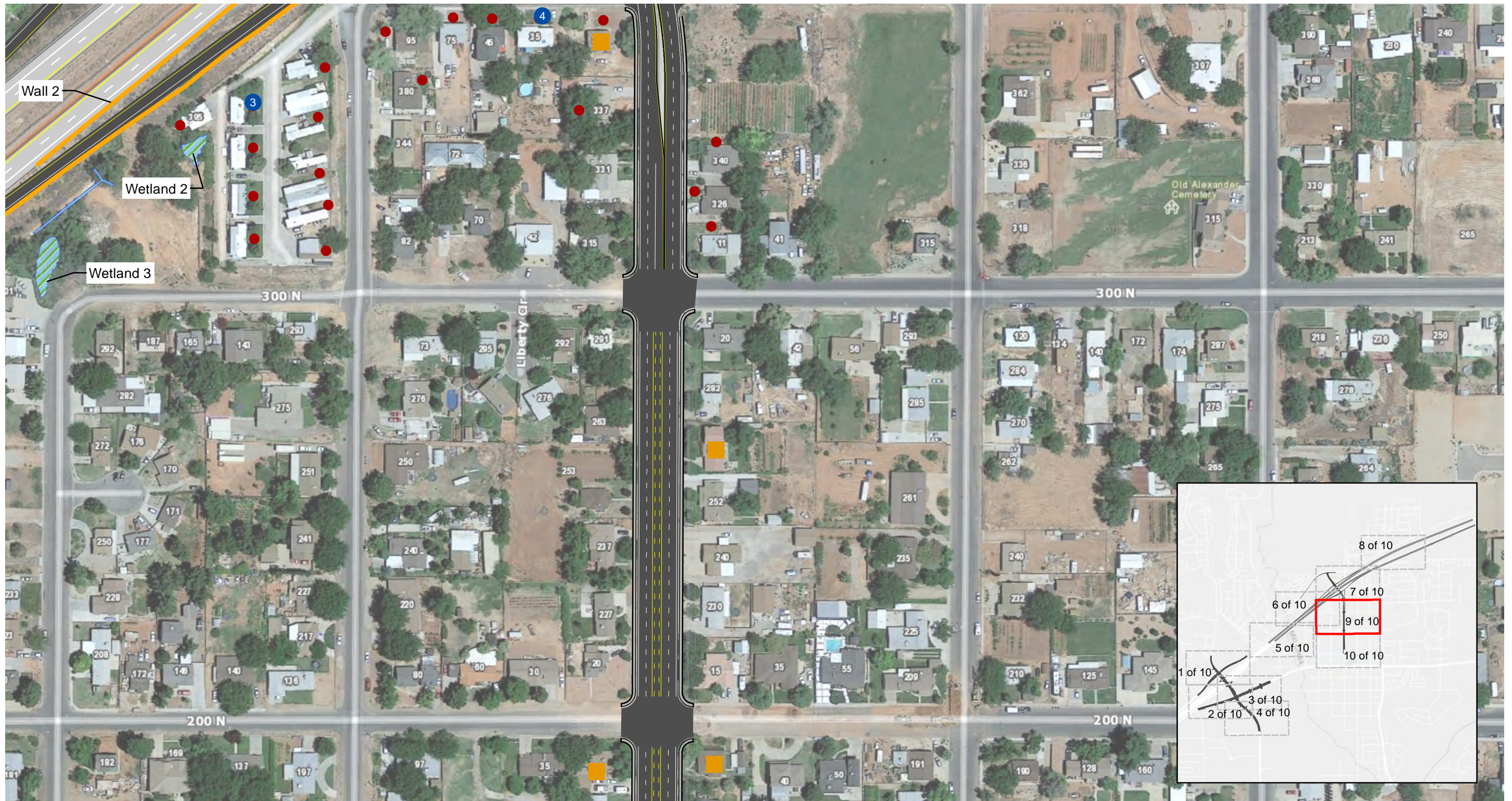


- | | | |
|---|--|---|
| ● Noise Measurement Site | ■ Historic Structures Eligible for the NRHP | ▨ Wetlands |
| ● Noise Impact | — Potential Noise Wall Locations (Pending Balloting) | ■ Waters of the US |
| ● Potential Relocations | ▲ Hazardous Waste Site | ■ Floodplain |
| ● Points of Diversion | ▨ Wetland Impacts | ■ Future Park |

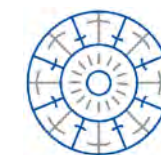


I-15 MP 11 INTERCHANGE
ENVIRONMENTAL STUDY

Alternative 4: Main Street Interchange
(Preferred Alternative)

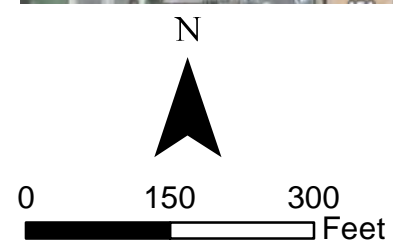
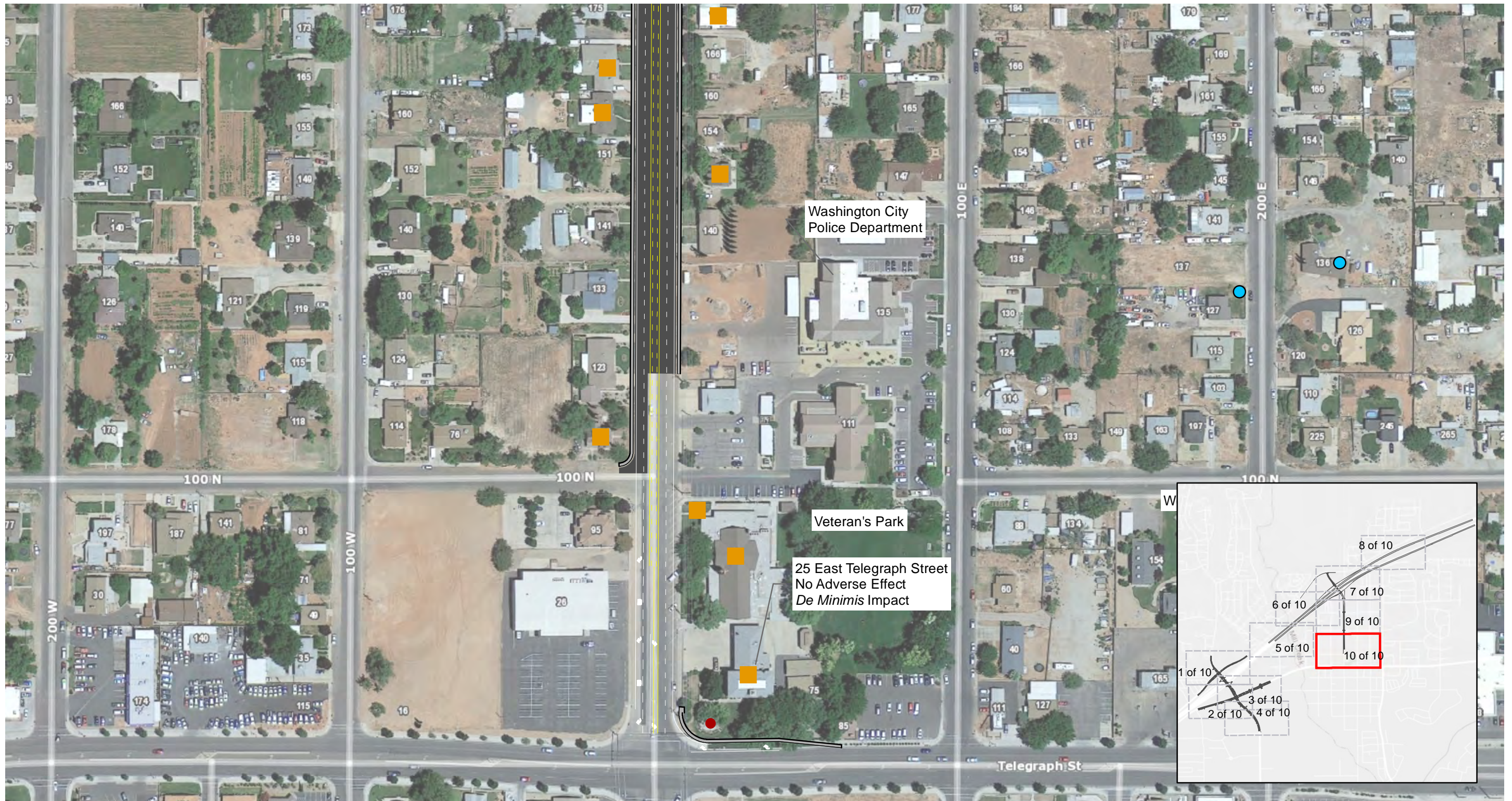


- | | | |
|---|---|--|
| ● Noise Measurement Site | ■ Historic Structures Eligible for the NRHP | Wetlands |
| ● Noise Impact | — Potential Noise Wall Locations (Pending Balloting) | Waters of the US |
| ● Potential Relocations | ▲ Hazardous Waste Site | Floodplain |
| ● Points of Diversion | Wetland Impacts | Future Park |



I-15 MP 11 INTERCHANGE
ENVIRONMENTAL STUDY

Alternative 4: Main Street Interchange
(Preferred Alternative)

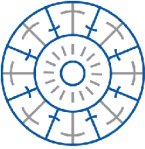
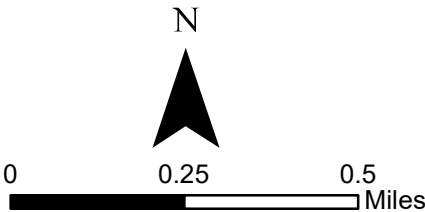
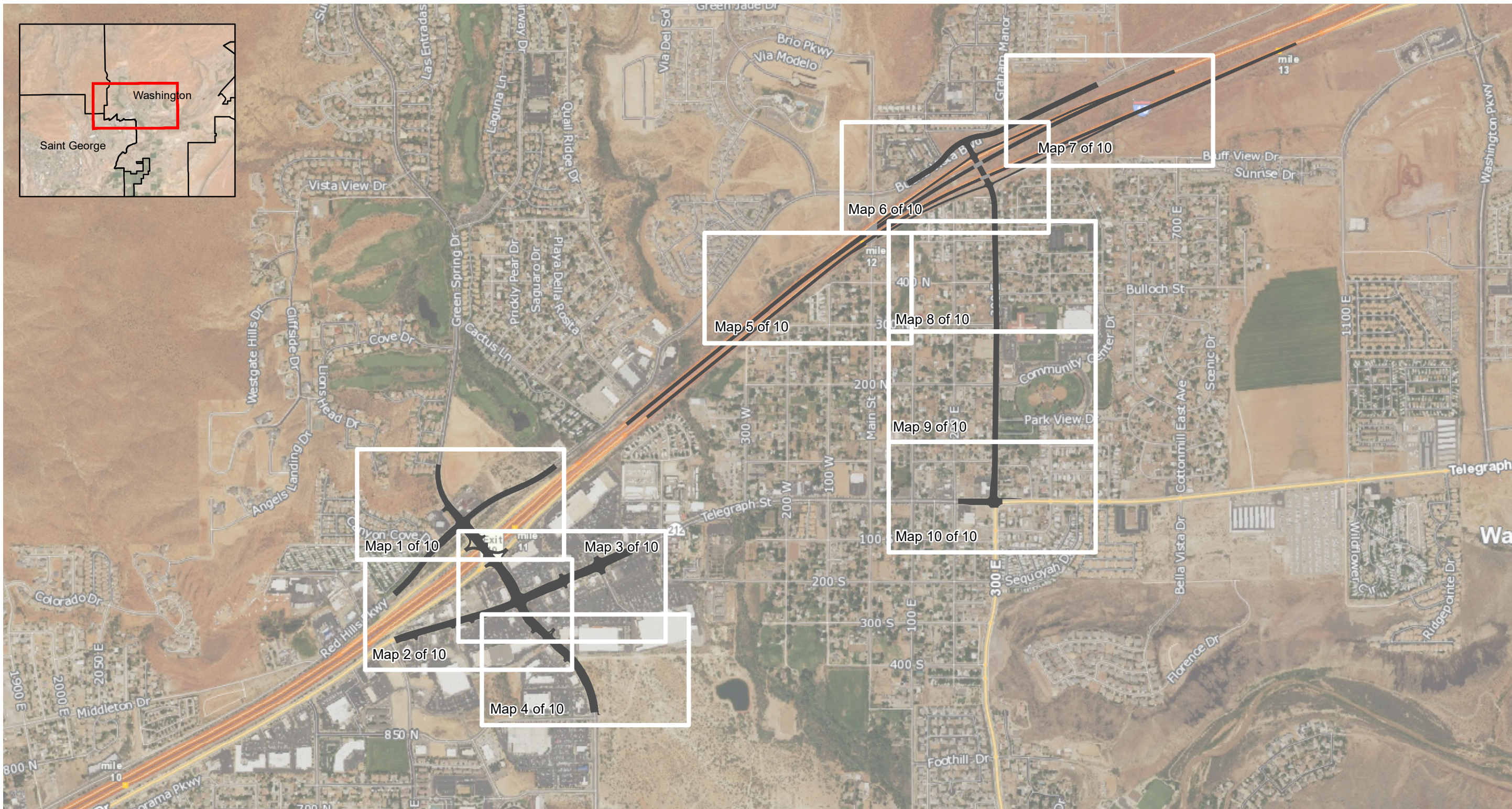
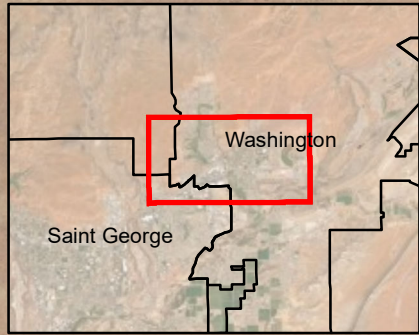


- | | | |
|------------------------|--|------------------|
| Noise Measurement Site | Historic Structures Eligible for the NRHP | Wetlands |
| Noise Impact | Potential Noise Wall Locations (Pending Balloting) | Waters of the US |
| Potential Relocations | Hazardous Waste Site | Floodplain |
| Points of Diversion | Wetland Impacts | Future Park |



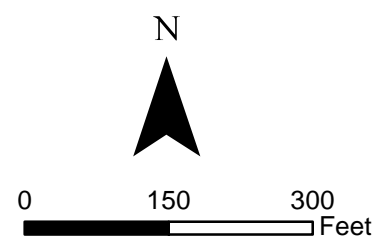
I-15 MP 11 INTERCHANGE
ENVIRONMENTAL STUDY

Alternative 4: Main Street Interchange
(Preferred Alternative)



I-15 MP 11 INTERCHANGE
ENVIRONMENTAL STUDY

Alternative 5: 300 East Interchange



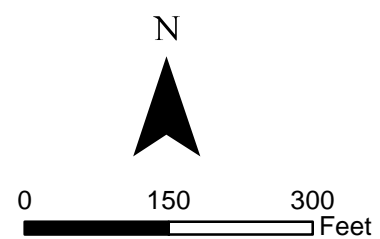
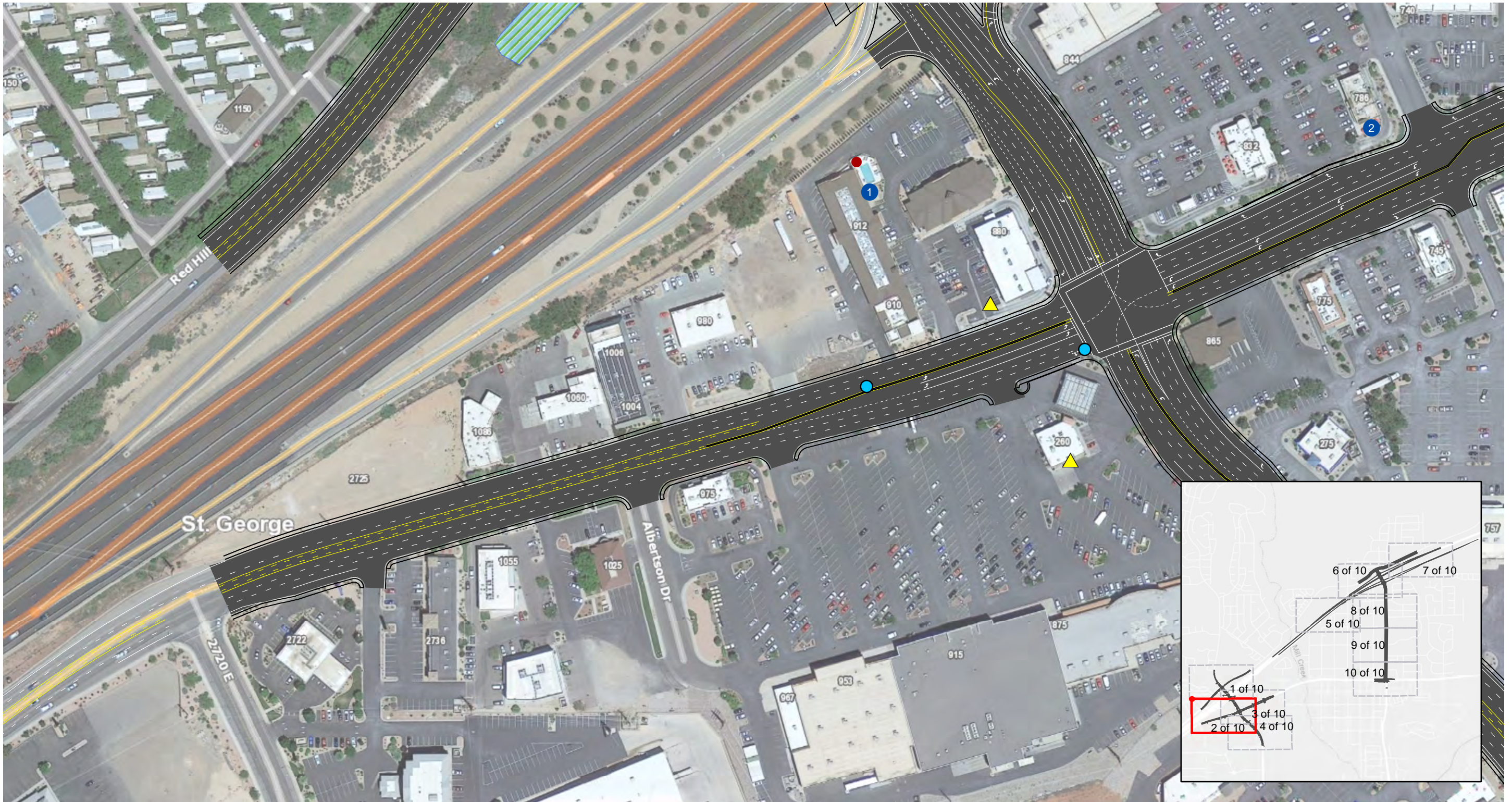
- | | | |
|---|--|---|
| ● Noise Measurement Site | ■ Historic Structures Eligible for the NRHP | Wetlands |
| ● Noise Impact | — Potential Noise Wall Locations | Waters of the US |
| ● Potential Relocations | ▲ Hazardous Waste Site | Floodplain |
| ● Points of Diversion | Future Park | |



I-15 MP 11 INTERCHANGE
ENVIRONMENTAL STUDY

Alternative 5: 300 East Interchange

Map 1 of 10



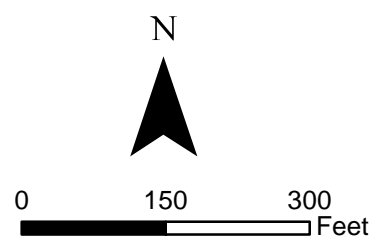
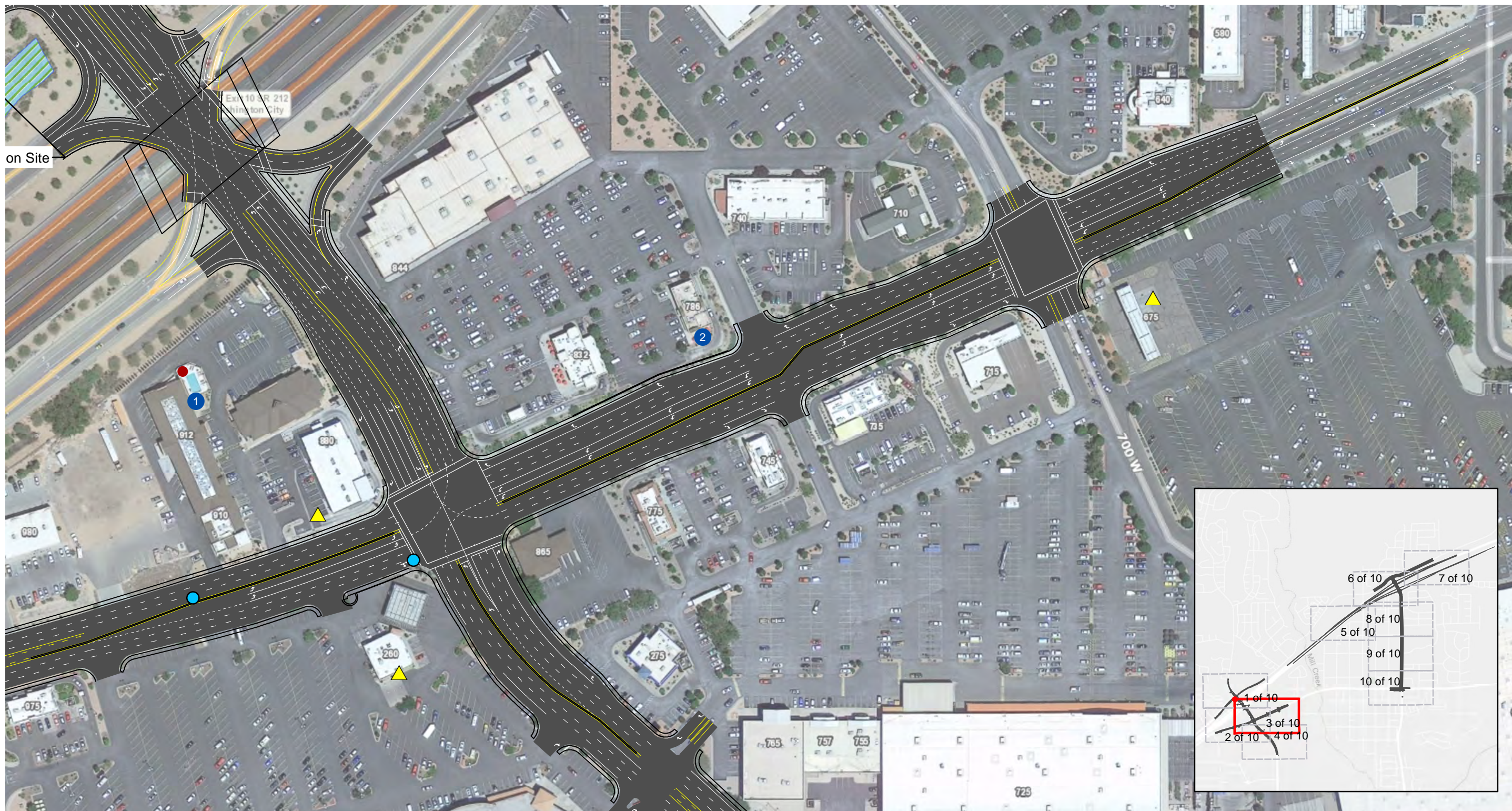
- | | | |
|---|---|---|
| ● Noise Measurement Site | ■ Historic Structures Eligible for the NRHP | ▨ Wetlands |
| ● Noise Impact | — Potential Noise Wall Locations | ■ Waters of the US |
| ● Potential Relocations | ▲ Hazardous Waste Site | ■ Floodplain |
| ● Points of Diversion | ■ Future Park | |



I-15 MP 11 INTERCHANGE
ENVIRONMENTAL STUDY

Alternative 5: 300 East Interchange

Map 2 of 10



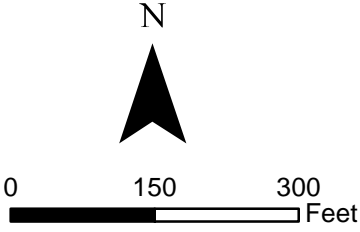
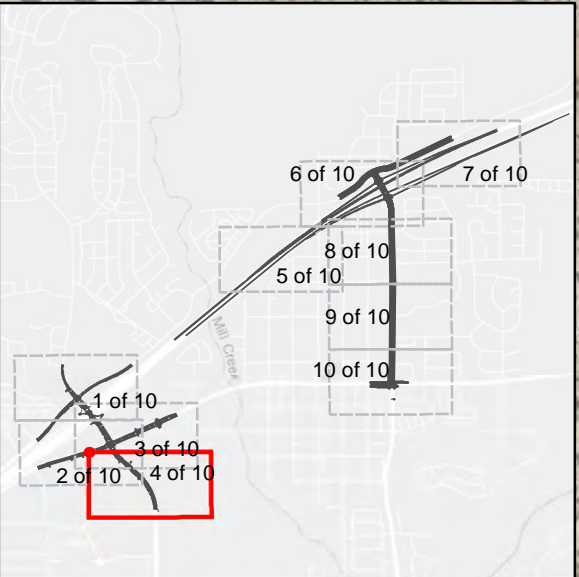
- | | | |
|---|---|---|
| ● Noise Measurement Site | ■ Historic Structures Eligible for the NRHP | ▨ Wetlands |
| ● Noise Impact | — Potential Noise Wall Locations | ■ Waters of the US |
| ● Potential Relocations | ▲ Hazardous Waste Site | ■ Floodplain |
| ● Points of Diversion | ■ Future Park | |



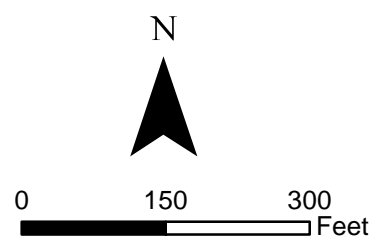
I-15 MP 11 INTERCHANGE
ENVIRONMENTAL STUDY

Alternative 5: 300 East Interchange

Map 3 of 10



- | | | |
|------------------------|---|------------------|
| Noise Measurement Site | Historic Structures Eligible for the NRHP | Wetlands |
| Noise Impact | Potential Noise Wall Locations | Waters of the US |
| Potential Relocations | Hazardous Waste Site | Floodplain |
| Points of Diversion | Future Park | |



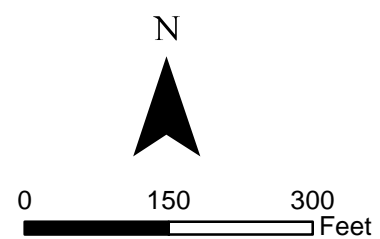
- | | | |
|--------------------------|---|--------------------|
| ● Noise Measurement Site | ■ Historic Structures Eligible for the NRHP | ▨ Wetlands |
| ● Noise Impact | — Potential Noise Wall Locations | ■ Waters of the US |
| ● Potential Relocations | ▲ Hazardous Waste Site | ■ Floodplain |
| ● Points of Diversion | ■ Future Park | |



I-15 MP 11 INTERCHANGE
ENVIRONMENTAL STUDY

Alternative 5: 300 East Interchange

Map 5 of 10



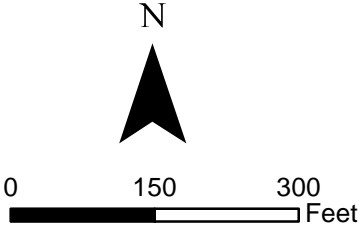
- | | | |
|---|---|---|
| ● Noise Measurement Site | ■ Historic Structures Eligible for the NRHP | ▨ Wetlands |
| ● Noise Impact | — Potential Noise Wall Locations | ■ Waters of the US |
| ● Potential Relocations | ▲ Hazardous Waste Site | ■ Floodplain |
| ● Points of Diversion | ■ Future Park | |



I-15 MP 11 INTERCHANGE
ENVIRONMENTAL STUDY

Alternative 5: 300 East Interchange

Map 6 of 10



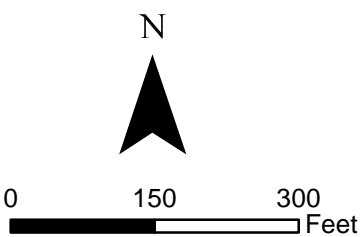
- | | | |
|---|---|--|
| ● Noise Measurement Site | — Historic Structures Eligible for the NRHP | Wetlands |
| ● Noise Impact | — Potential Noise Wall Locations | Waters of the US |
| ● Potential Relocations | ▲ Hazardous Waste Site | Floodplain |
| ● Points of Diversion | Future Park | |









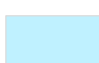


I-15 MP 11 INTERCHANGE

ENVIRONMENTAL STUDY

Alternative 5: 300 East Interchange

Map 7 of 10



- | | | |
|--|---|--|
|  Noise Measurement Site |  Historic Structures Eligible for the NRHP |  Wetlands |
|  Noise Impact |  Potential Noise Wall Locations |  Waters of the US |
|  Potential Relocations |  Hazardous Waste Site |  Floodplain |
|  Points of Diversion |  Future Park | |



I-15 MP 11 INTERCHANGE
ENVIRONMENTAL STUDY

Alternative 5: 300 East Interchange

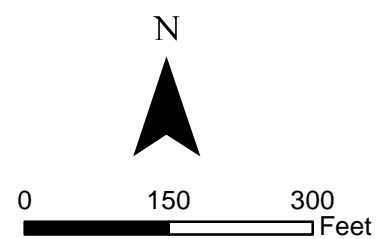
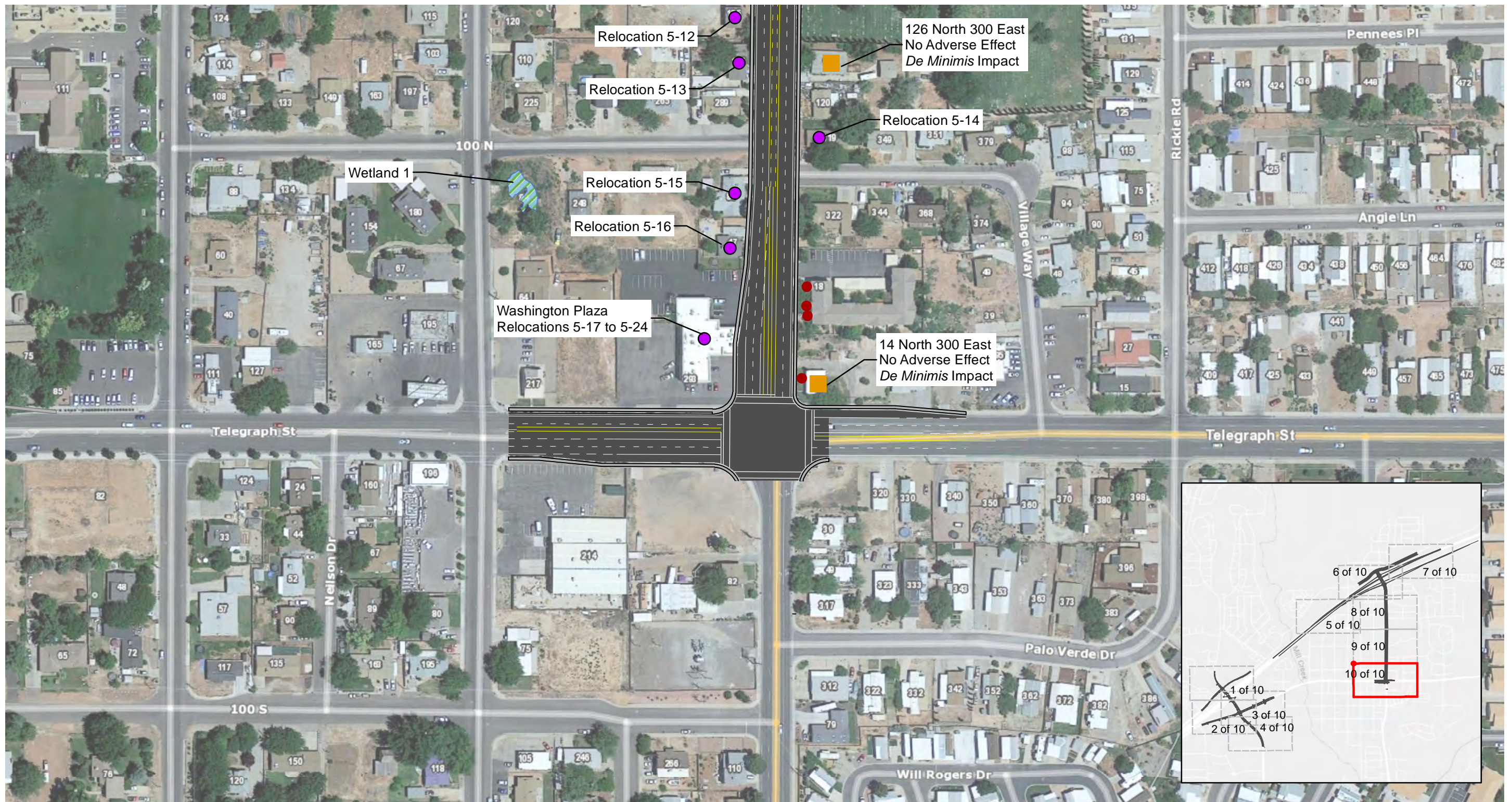
Map 8 of 10



I-15 MP 11 INTERCHANGE
ENVIRONMENTAL STUDY

Alternative 5: 300 East Interchange

Map 9 of 10



- | | | | | | |
|--|------------------------|--|---|--|------------------|
| | Noise Measurement Site | | Historic Structures Eligible for the NRHP | | Wetlands |
| | Noise Impact | | Potential Noise Wall Locations | | Waters of the US |
| | Potential Relocations | | Hazardous Waste Site | | Floodplain |
| | Points of Diversion | | Future Park | | |



I-15 MP 11 INTERCHANGE
ENVIRONMENTAL STUDY

Alternative 5: 300 East Interchange

Map 10 of 10